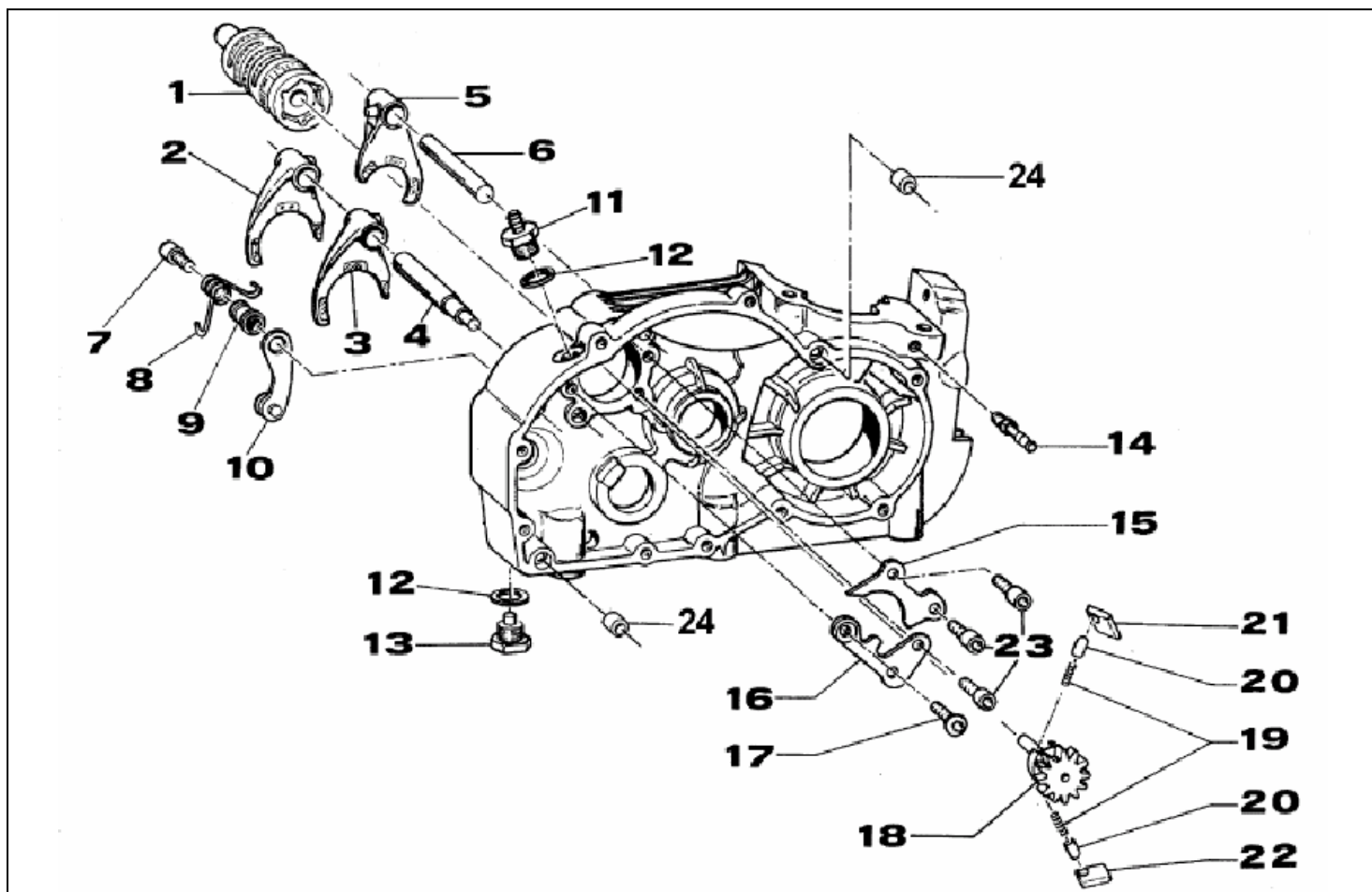


GEARBOX



| Nr | Description | Code |
|----|--------------------------|-----------------|
| 1 | Drum | FB 142 2 0801 1 |
| 2 | Fork, countershaft | FB 142 2 0802 1 |
| 3 | Fork, countershaft | FB 142 2 0803 1 |
| 4 | Shaft, countershaft fork | FB 142 2 0804 1 |
| 5 | Fork, mainshaft | FB 142 2 0805 1 |
| 6 | Shaft, mainshaft fork | FB 142 2 0806 1 |
| 7 | Screw M 6 x 25 | FB 142 2 0807 1 |
| 8 | Spring | FB 142 2 0808 1 |
| 9 | Spacer, spring | FB 142 2 0809 1 |
| 10 | Stopper comp. | FB 142 2 0810 1 |
| 11 | Oil plug | FB 142 2 0811 1 |
| 12 | Bearing | FB 142 2 0812 1 |

| Nr | Description | Code |
|----|----------------------|-----------------|
| 13 | Oil plug with magnet | FB 142 2 0813 1 |
| 14 | Breather | FB 142 2 0814 1 |
| 15 | Plate, ratchet | FB 142 2 0815 1 |
| 16 | Plate | FB 142 2 0816 1 |
| 17 | Screw M6 x 20 | FB 142 2 0817 1 |
| 18 | Shifter gear | FB 142 2 0818 1 |
| 19 | Spring | FB 142 2 0819 1 |
| 20 | Plunger | FB 142 2 0820 1 |
| 21 | Ratchet, upper | FB 142 2 0821 1 |
| 22 | Ratchet, lower | FB 142 2 0822 1 |
| 23 | Screw M6 x 16 | FB 142 2 0823 1 |
| 24 | Dowel 10 x 8 F.7 | FB 142 2 0824 1 |